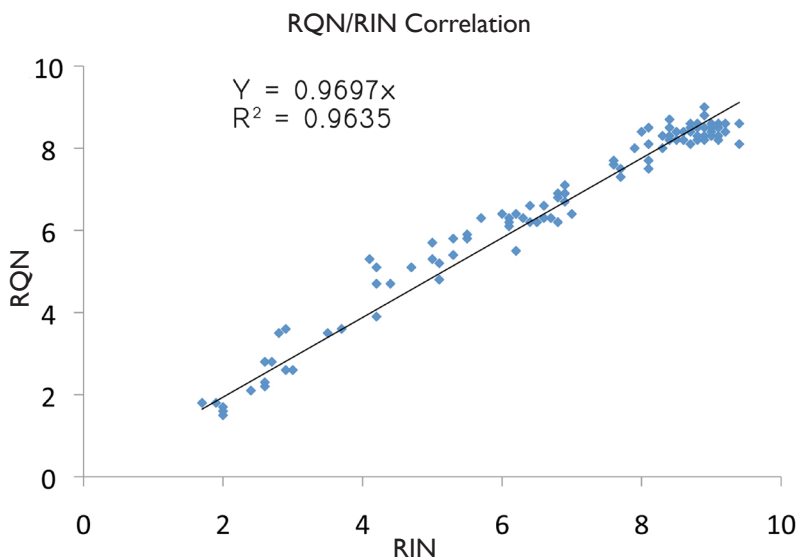


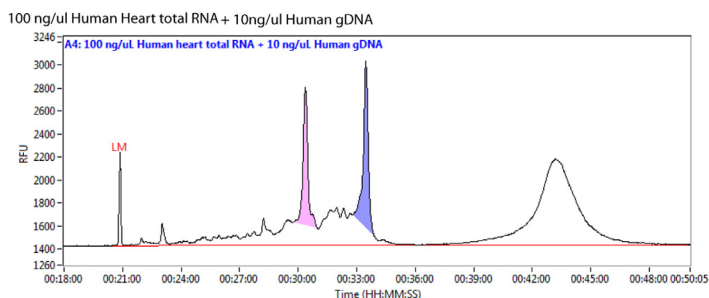
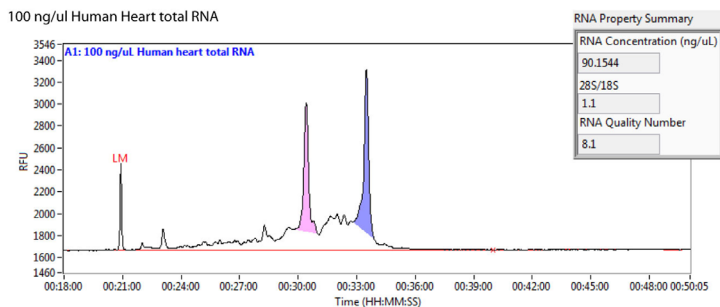
Check quantity AND quality of total RNA with one instrument.

The Fragment Analyzer™ Automated CE System



Correlation between the Fragment Analyzer's RNA Quality Number (RQN) and the chip-based electrophoresis RIN, showing that the Fragment Analyzer™ RQN is equivalent to RIN. The dataset includes over 100 samples from various origins with various states of degradation at different concentrations.

- ◆ **RQN:** Provides RNA quality indicator which correlates to current industry practices (RIN).
- ◆ **High Sensitivity:** Detection limits as low as 5 ng/μL.
- ◆ **Short Run Times:** Analysis of 12 or 96 samples in less than 50 minutes.
- ◆ **No Manual Priming:** Separation gel is automatically loaded into capillaries prior to each run.
- ◆ **No Chip Loading:** Universal capillary array handles multiple applications.
- ◆ **Automated Sample Handling:** Simply load 96-well sample plate or tube strips onto the instrument.
- ◆ **Flexible Platform Design:** Use the system for more than just total RNA. Gel kits for mRNA, NGS fragment analysis, dsDNA fragments from 10 bp – 40,000 bp are available.



Human heart total RNA electropherograms obtained from the Fragment Analyzer™. Top panel shows RNA sample without gDNA; bottom panel shows gDNA contamination (peak to far right). Blue peak corresponds to the 28S region; red peak corresponds to 18S region.

